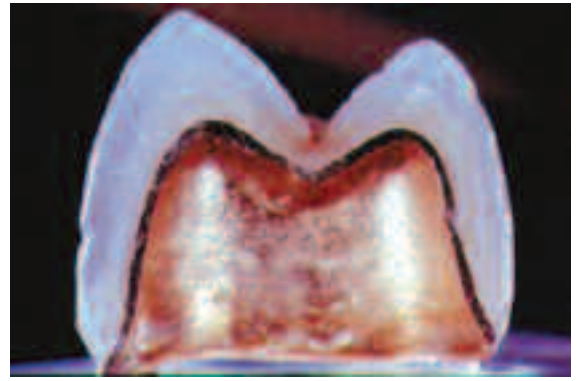


PRODUCT PROFILE

NAME OF PRODUCT:	Captek™
MANUFACTURER:	Precious Chemicals, Inc.
BRIEF DESCRIPTION:	A high noble coping/substructure fused to porcelain 88 % gold (22k) coping Capillary technology - high strength platinum/palladium/gold alloy in a matrix of 97% gold
BENEFITS FOR DOCTOR'S OFFICE:	Strength - composite metal Marginal fit High noble internal gold
BENEFITS FOR PATIENT:	Periodontal health - 90% less plaque accumulation Beauty - no dark margins, warm gold color, excellent light dispersion through porcelain
WHAT TO SEND LABORATORY:	Impression of prepared tooth, with opposing and bite registration Shade
INDICATIONS:	Anterior or posterior PFM crowns and bridges For periodontal patients health
CONTRA-INDICATIONS	None



PREPARATION INSTRUCTIONS:

Any style of margin design; shoulder, chamfer, feather-edge or bevel.
Occlusal clearance 1.5 mm.
Standard retention and resistance form.
For best esthetics: equigingival to subgingival margin for a margin where Captek metal is extended to edge.
Supragingival acceptable for ceramic margin.

DAYS IN LAB:

8

SEATING INSTRUCTIONS:

Any traditional cement can be used.
Only line internal surface with cement - do not overfill.
Clean internal aspect of crown with crown cleaning solution.
If prep lacking in retention, use light aluminous oxide abrasion @ 20-40 lbs. pressure with 50 micron aluminous oxide.
If bonding, also lightly air abrade per above.

AFTER CARE:

Routine care

INSURANCE CODE:

D2750 crown - porcelain fused to high noble metal
For a bridge
D6750 crown - porcelain fused to high noble metal
D6240 pontic - porcelain fused to high noble metal

CHAIRSIDE INSTRUCTIONS: Use caution adjusting or air abrading the internal surface of crown.

TESTIMONIALS & QUOTES:

Captek is a proud winner of the 2003 and 2004 Townie Award for best Crown & Bridge / PFM Crowns.

Captek was recognized in February 2004 by Dr. Joe Blaes as a "Pearl For Your Practice".

"We look at Captek as the ideal metal supported crown. In fact, it's the only one we'll use." *Dr. Ross Nash & Dr. Robert Lowe*

CLINICAL TESTING: Originally developed and tested in Israel, Tel Aviv University Sackler School of Medicine by Dr. Itzhak Shoher DMD, MS.

UNIVERSITY REPORTS

"Preliminary Evaluation of Effect of Crown on Gingival Color"
Harvard Report March 2004

"Marginal Fit of Captek and Conventional Metal-Ceramic Restorations"
Boston University Goldman School of Dentistry

"Research Report on Captek"
Boston University 1995

"The Surface Free Energy of Gold Alloy Systems"
University of Minnesota March 2003

"Captek - Substrate to Cement Shear Bond Strength"
Fixed Prosthodontics Dept., Oregon Health Science, University of Portland

"Tooth Preparations for Complete Crowns: An Art Form Based on Scientific Principles"
School of Dentistry, Loma Linda University and College of Dentistry, University of Iowa, Iowa City.

D&S Dental Laboratory, Inc. is a "Captek Certified Lab."