



## D&S Dental Laboratory The Team You Trust

Founded in 1972, D&S Dental Laboratory's mission is to ensure our customers' needs are given top priority and that dentists view us as their most trusted resource and partner.



■ D&S National Reach

- ✓ **Five Laboratory Locations**
- ✓ **100 Employees**
- ✓ **11 Certified Dental Technicians**
- ✓ **Certified Dental Laboratory Since 1983**
- ✓ **DAMAS Laboratory Since 2015**

**Waunakee Laboratory**  
608-849-5343  
1020 Quinn Drive  
Waunakee, WI 53597

**Baraboo Laboratory**  
608-356-2143  
637 15th Street  
Baraboo, WI 53913

**Eau Claire Laboratory**  
715-895-7111  
4235 Southtowne Drive  
Eau Claire, WI 54701

**Rockford Laboratory**  
815-964-8932  
6785 Weaver Rd. #1C  
Rockford, IL 61114

**Greenfield Laboratory**  
414-546-3040  
7420 W. Forest Home Ave.  
Greenfield, WI 53220

### Crown & Bridge

- ZR Zirconia Crowns
- Imagine™ & Lava™ Esthetic
- IPS e.max®
- Lava™
- PFM/FCC

### Removable

- Classic Dentures
- Flexible Partial
- Mouth Guards
- Nightguards
- Metal Frameworks

### Implant

- Straumann®
- Dentsply
- Nobel Biocare®
- Keystone
- Zimmer™

# The D&S Story

## Over 45 Years of Excellence



### 2019

D&S continues digital advancement and begins fabricating digital dentures in-house.



### 2015

Waukege headquarters receives DAMAS accreditation in recognition of our commitment to the best quality assurance processes in the industry.



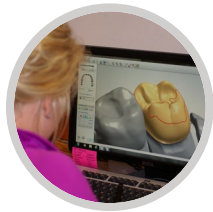
### 2008

D&S team begins in-house 3D printing.



### 2003

Current headquarters constructed in Waukege, Wisconsin.



### 1998

D&S integrates computer-aided-design (CAD) into fixed restoration fabrication.



### 1982

D&S expands by opening laboratory in Baraboo, Wisconsin.

### 2018

Laboratory begins in-house milling of non-metal RPDs and splints.



### 2014

D&S expands by purchasing laboratory locations in Rockford, Illinois and Greenfield, Wisconsin.



### 2006

D&S expands by adding laboratory location to service Eau Claire and Mondovi, Wisconsin.



### 2001

D&S integrates computer-aided-manufacturing (CAM) into workflow.



### 1983

D&S becomes a Certified Dental Laboratory with the NADL.



### 1972

D&S Dental Laboratory is founded in Madison, Wisconsin by Dick and Sally Pilsner.



See more of our historical milestones at [www.dnsdental.com/our-story](http://www.dnsdental.com/our-story).