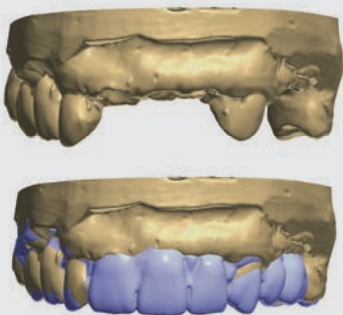




TECHNICIAN'S TIPS OF THE MONTH

- 1** When possible, it is helpful to provide a pre-op model and/or intraoral scan. This extra step aids our technicians in better understanding how the existing dentition was prior to prep. We have the ability to utilize this information as we are designing the case and it helps with margin marking. Most intraoral scanners have this option available for submission.



- 2** We recommend using BISCO's Z-PRIME™ Plus primer for bonding zirconia crowns, especially if you're having issues with crowns coming off.